



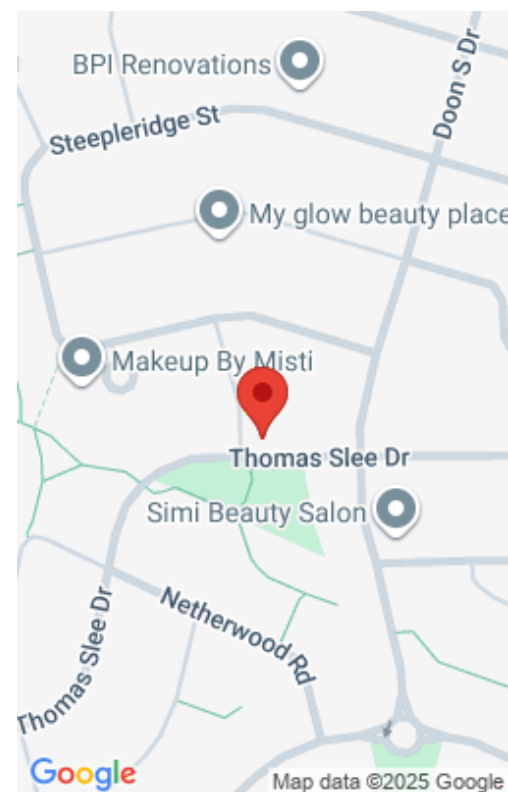
**\$1,999**

## **338 THOMAS SLEE DR, KITCHENER, ON N2P 0B3, CANADA**

<https://krealtypros.com>

Welcome to the highly sought DOON / WYLDWOOD Neighbourhood. This completely private and quiet 2 bedroom unit has so much to offer! The Lower B unit offers large windows throughout. Featuring an open concept kitchen, dinette and living room. with 2 beds, 1 full bath, in unit laundry, and direct access to the oversized private [...]

- 2 beds
- 1 bath
- Single Family Residence
- Residential Lease
- Active
- 900 sq ft



---

# Building Details

<b>Building Area Total:</b> 900 sq ft	<b>Parking Features:</b> Attached Garage, Asphalt
<b>Covered Spaces:</b> 1	<b>Construction Materials:</b> Brick, Stone, Vinyl Siding
<b>Garage Spaces:</b> 1	<b>Roof:</b> Asphalt Shing

---

# Amenities & Features

<b>Water Source:</b> Municipal	<b>Architectural Style:</b> 1 Storey/Apt
<b>Appliances:</b> Dishwasher, Dryer, Refrigerator, Stove, Washer	<b>Sewer:</b> Sewer (Municipal)
<b>Cooling:</b> Central Air	<b>Attached Garage Yes/ No:</b> 1
<b>Interior Features:</b> Separate Hydro Meters	<b>Heating:</b> Forced Air, Natural Gas
<b>Furnished:</b> Unfurnished	<b>Frontage Type:</b> South

