



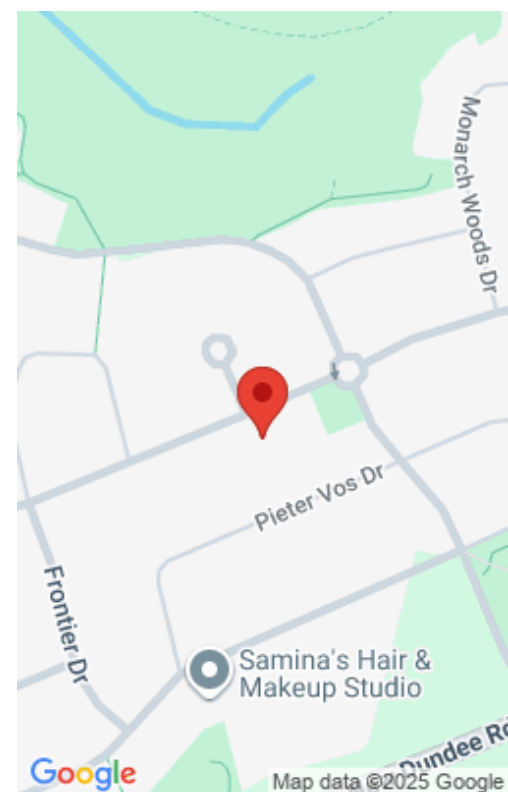
\$929,900

561 THOMAS SLEE DR, KITCHENER, ON N2P 2Y7, CANADA

<https://krealtypros.com>

LEGAL DUPLEX with WALKOUT BASEMENT in Prestigious Doon South! Discover this beautifully upgraded 2-storey detached home on a spacious 43' wide lot, just 3 km from Hwy 401—ideal for commuters, families, or investors seeking extra income. Thoughtfully designed and freshly painted, this home offers a spacious 3-bedroom upper unit and a legal 1-bedroom walkout basement [...]

- 4 beds
- 3 baths
- Single Family Residence
- Residential
- Active
- 1765 sq ft



Building Details

Building Area Total: 2265 sq ft

Security Features: Smoke Detector(s)

Construction Materials: Brick Veneer, Vinyl Siding

Roof: Asphalt Shing

Parking Features: Attached Garage, Garage Door Opener, Asphalt, Built-In

Covered Spaces: 2

Garage Spaces: 2

Amenities & Features

Water Source: Municipal-Metered

Architectural Style: Two Story

Sewer: Sewer (Municipal)

Cooling: Central Air

Interior Features: Accessory Apartment, Air Exchanger, Auto Garage Door Remote(s), Central Vacuum Roughed-in, In-Law Floorplan, Water Meter

Frontage Type: North

Patio & Porch Features: Deck, Patio, Porch

Appliances: Water Heater Owned, Water Softener, Dishwasher, Dryer, Microwave, Refrigerator, Stove, Washer

Window Features: Window Coverings

Attached Garage Yes/ No: 1

Heating: Natural Gas

