



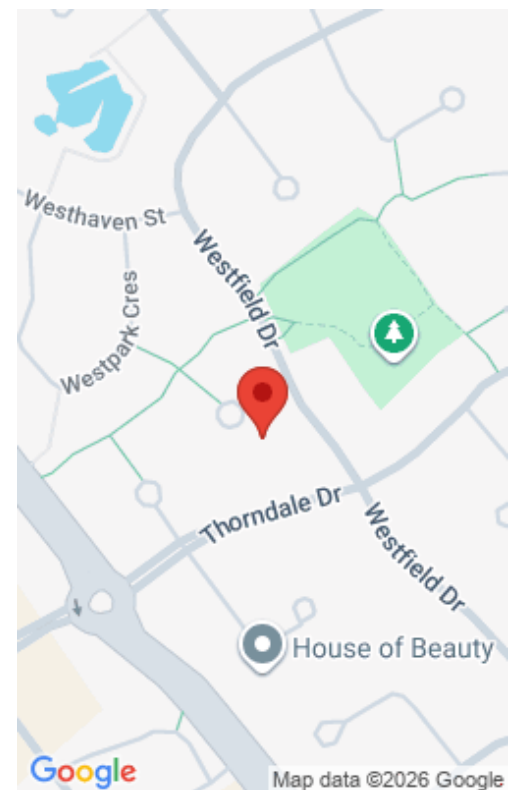
\$1,060,000

200 WESTFIELD PL, WATERLOO, ON N2T 2R2, CANADA

<https://krealitypros.com>

CONVENIENCE, CONVENIENCE, CONVENIENCE!!! Welcome to 200 Westfield Pl, Waterloo , it's all about CONVENIENCE. This move-in-ready family home combines space, modern living, income potential, and hassle-free living in walkable Westvale. With more than 3,300 sq. ft. of finished living space, a fully finished basement suite, and rare 6 drive way parking spots (no sidewalk = [...])

- 7 beds
- 5 baths
- Single Family Residence
- Residential
- Active
- 2425 sq ft



Building Details

Building Area Total: 3405 sq ft

Parking Features: Attached Garage, Garage Door Opener

Security Features: Smoke Detector

Covered Spaces: 2

Construction Materials: Brick, Vinyl Siding

Garage Spaces: 2

Roof: Asphalt Shing

Amenities & Features

Water Source: Municipal

Architectural Style: Two Story

Appliances: Water Heater, Water Softener, Dishwasher, Dryer, Range Hood, Refrigerator, Stove, Washer

Sewer: Sewer (Municipal)

Cooling: Central Air

Attached Garage Yes/ No: 1

Interior Features: Auto Garage Door Remote(s), Central Vacuum, Water Meter

Heating: Natural Gas

Frontage Type: South

