



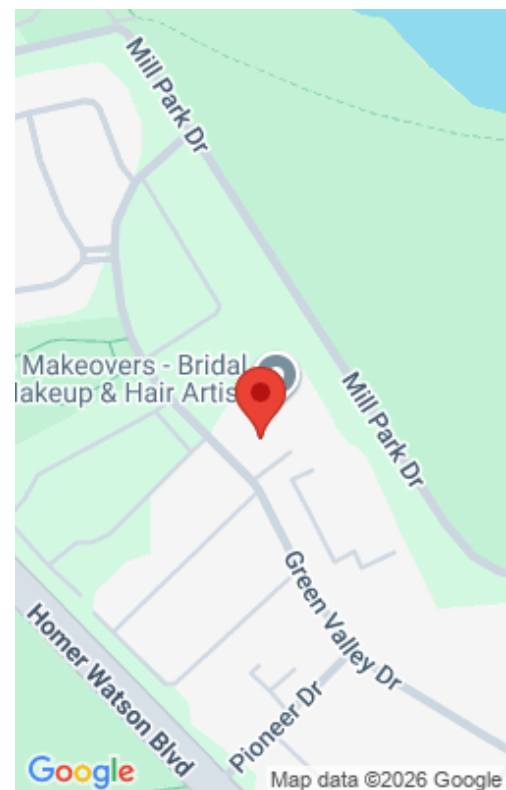
\$399,900

350 O'LOANE AVE, KITCHENER, ON N5A 0J2, CANADA

<https://krealtypros.com>

Bright Corner Unit with Great View – Move-In Ready! This carpet-free corner unit is bright and inviting, featuring neutral décor and an open layout. The spacious kitchen offers plenty of storage. Ceramic tile and laminate flooring run throughout, and a new air conditioner was installed this fall. Both bedrooms have ceiling fans, and the primary [...]

- 2 beds
- 2 baths
- Condo/Apt Unit
- Residential
- Active
- 1050 sq ft



Building Details

Building Area Total: 1050 sq ft	Parking Features: Asphalt, Exclusive
Security Features: Smoke Detector(s)	Construction Materials: Brick, Block
Accessibility Features: Ramps, Wheelchair Access	Roof: Flat

Amenities & Features

Water Source: Municipal	Architectural Style: 1 Storey/Apt
Appliances: Water Softener, Dryer, Freezer, Refrigerator, Stove, Washer	Sewer: Sewer (Municipal)
Window Features: Window Coverings	Cooling: Window Unit(s)
Interior Features: Auto Garage Door Remote(s), Sauna	Heating: Baseboard, Electric
Frontage Type: West	

