



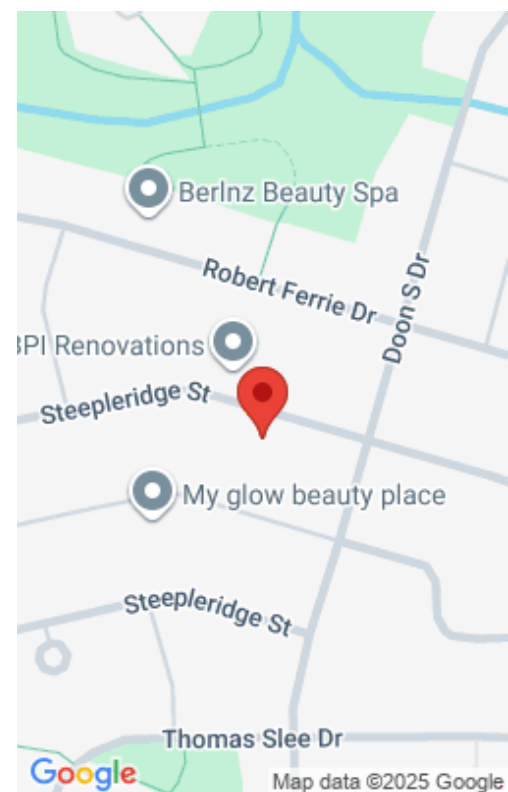
\$999,800

125 STEEPLERIDGE ST, KITCHENER, ON N2P 2W2, CANADA

<https://krealitypros.com>

RENOVATED FROM TOP TO BOTTOM with over 2700Sqft of living space! Located in one of the most desirable neighbourhoods in Kitchener, welcome to 125 Steepleridge Street in the Doon South Area. This CARPET FREE home is fully finished inside and out, it has three large bedrooms, four bathrooms, and second floor family room that you [...]

- 3 beds
- 4 baths
- Single Family Residence
- Residential
- Active
- 1963 sq ft



Building Details

Building Area Total: 2740 sq ft

Security Features: Security System, Smoke Detector(s)

Construction Materials: Brick, Vinyl Siding

Roof: Asphalt Shing

Parking Features: Attached Garage, Garage Door Opener, Asphalt

Covered Spaces: 2

Garage Spaces: 2

Amenities & Features

Water Source: Municipal-Metered

Architectural Style: Two Story

Sewer: Sewer (Municipal)

Window Features: Window Coverings

Attached Garage Yes/ No: 1

Heating: Forced Air, Natural Gas

Fireplace Features: Electric

Patio & Porch Features: Deck

Appliances: Instant Hot Water, Water Heater Owned, Water Softener, Dishwasher, Dryer, Hot Water Tank Owned, Refrigerator, Stove, Washer

Exterior Features: Landscaped

Cooling: Central Air

Interior Features: Central Vacuum, Auto Garage Door Remote(s), Ceiling Fan(s)

Frontage Type: South

Fencing: Full

